



CRU1520P w/o Panel

Monoblock Cooler Unit (15,1-20m³)

Product Features

- Monoblock cooling unit
- Automatic condensate evaporation
- Ambient temperature up to +43 °C and 65% humidity
- Digital controller and temperature display
- Stainless steel finish
- Fits panels with a thickness of 80-150 mm

Monoblock cooler unit for temperature -2 to +8 °C

Monoblock cooler unit for cold rooms with a volume of 15,1-20m³.

Measures and Content

Capacity Cooling Coldroom Units	m ³	15,1 - 20
Temperature Range	°C	0 to +8
Gross / Net Weight	kg	110 / 100

Design and Material

Exterior Finish	Stainless steel
Interior Finish	-

Cooling and Functions

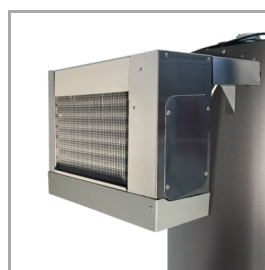
Type of Controller	Electronic	
Type of Defrost	Automatic, hot gas	
Refrigerant	R290	
Refrigerant Charge	g	200
Thermometer	Yes	

Power and Consumption

Annual Energy Cons.	kWh/year	9461
Energy Consumption	kWh/24h	25.92
Input Power	W	1390
Voltage / Frequency	V/Hz	220-240/50

Dimensions

External Dimension (WxDxH)	mm	600 x 960 x 880
Packed Dimension (WxDxH)	mm	790 x 1150 x 1170
40ft Container Load	pcs	60



Monoblock rear – no panel attached



Digital controller